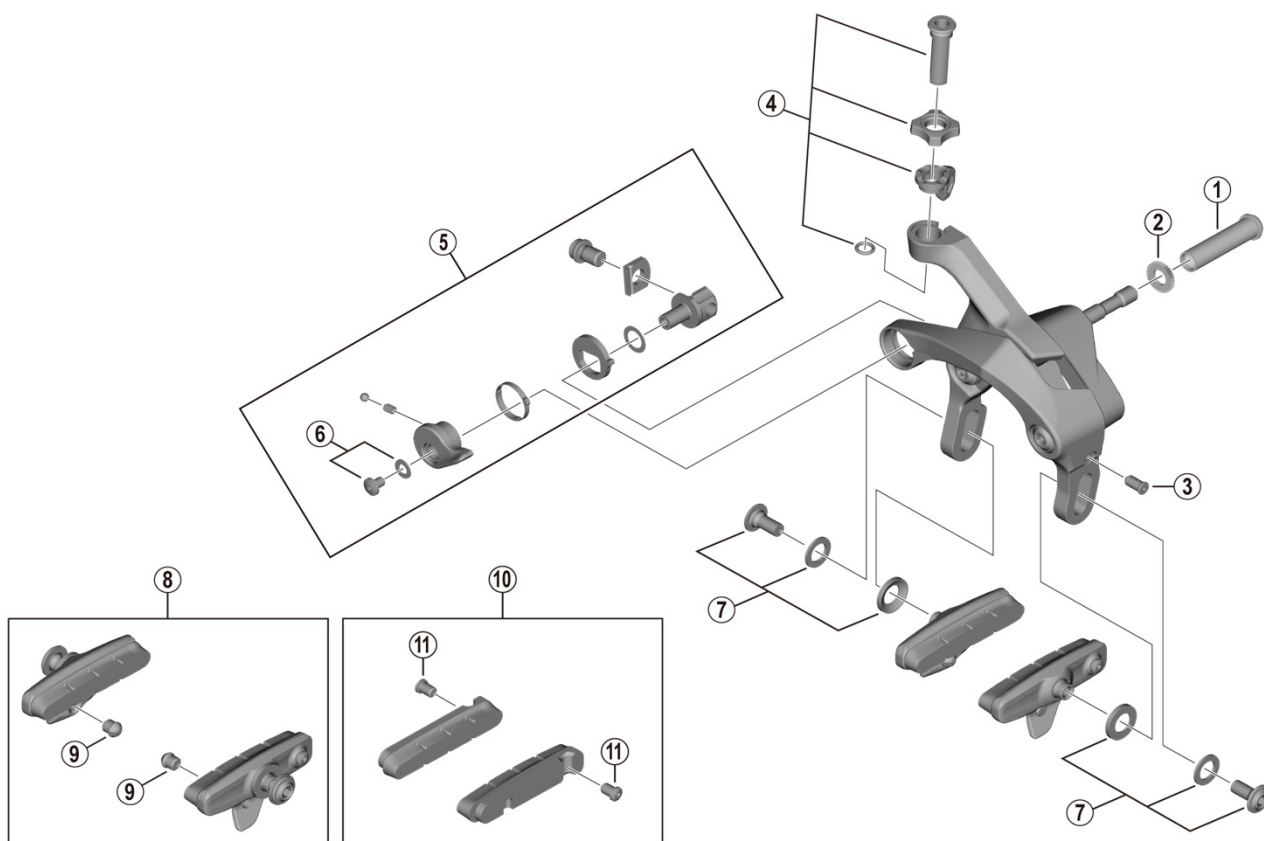


# DURA-ACE Caliper Brake BR-R9200



ITEM NO.	SHIMANO CODE NO.	DESCRIPTION	INTERCHANGEABILITY	
			BR-R9100	BR-9000
1	Y8G615000	Pivot nut (10.5 mm) for front / rear	A	A
	Y8G615010	Pivot nut (12.5 mm) for front	A	A
	Y85574310	Pivot nut (18.0 mm) for front	A	A
	Y8A023200	Pivot nut (27.0 mm) for front	A	A
	Y8A023210	Pivot nut (32.0 mm) for front	A	A
2	Y87008100	Set washer	A	A
3	Y8PP09000	EC-screw	A	
4	Y8PP98010	Cable adjusting screw unit	A	B
5	Y8PP98020	Quick release assembly	A	
6	Y8PP98030	Quick release fixing screw and washer	A	
7	Y8PP98050	Shoe fixing screw unit (M5 x 11.2)	A	B
8	Y8L298050	R55C4 Cartridge-type brake shoe set (pair)	A	A
9	Y8FA16000	Tire guide	A	A
10	Y8L298060	R55C4 Cartridge-type brake shoes and fixing bolts (pair)	A	A
	Y8L298070	R55C4 Cartridge-type brake shoes and fixing bolts (pair) for carbon rim	A	A
	Y8PP98060	R55C4-A Cartridge-type brake shoes (-1 mm thinner shoe) and fixing bolts (pair) for carbon rim	A	A
11	Y8L227000	Fixing screw (M4 x 5.5)	A	A

A: Same parts.

B: Parts are usable, but differ in materials, appearance, finish, size, etc.

Absence of mark indicates non-interchangeability.

Specifications are subject to change without notice.

Jun.-2021-4805

© Shimano Inc. I

# SHIMANO