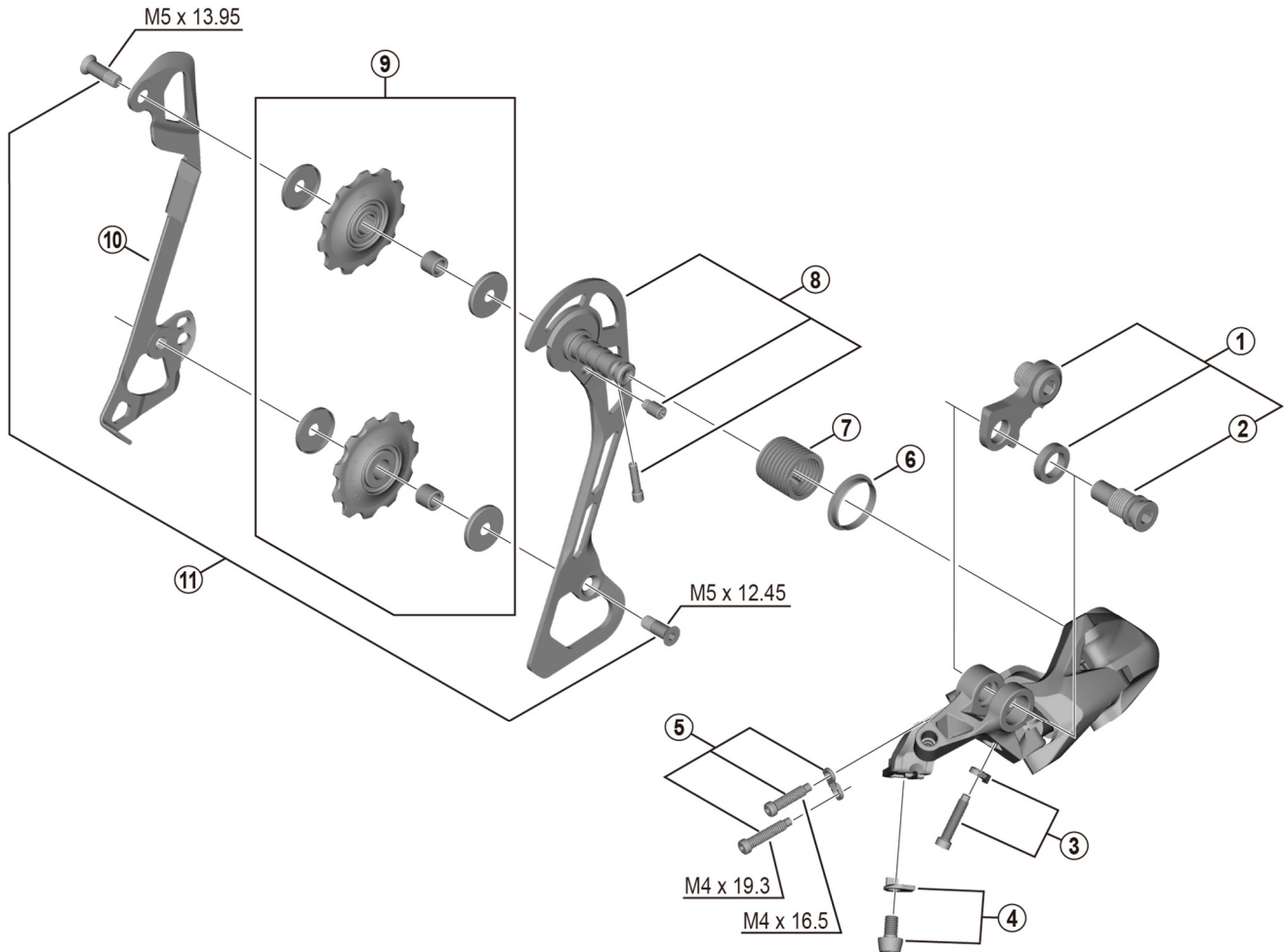


DEORE Rear Derailleur (10-speed)

RD-T6000-SGS



RD-M6000-SGS

ITEM NO.	SHIMANO CODE NO.	DESCRIPTION	INTERCHANGE-ABILITY		
1	Y5ZH98010	Bracket Axle Unit (for normal type)	A		
2	Y50Y17000	B-Axle 2 (for Direct Mount type)			
3	Y5ZH98030	End Adjust Bolt (M4 x 18) & Plate	A		
4	Y5X798010	Cable Fixing Bolt (M5 x 8.5) & Plate	A		
5	Y5ZH98040	Cable Stroke Adjusting Bolt & Plate	A		
6	Y5UC14000	P-Seal Ring			
7	Y5W722000	P-Tension Spring			
8	Y3E598020	Outer Plate Assembly			
9	Y3E598010	Tension & Guide Pulley Set			
10	Y3E526000	Inner Plate			
11	Y5WM98050	Pulley Bolt (M5 x 12.45) & (M5 x13.95)			

A: Same parts.

B: Parts are usable, but differ in materials, appearance, finish, size, etc.

Absence of mark indicates non-interchangeability.

Specifications are subject to change without notice.

Jun.-2017-4199

© Shimano Inc. I

SHIMANO